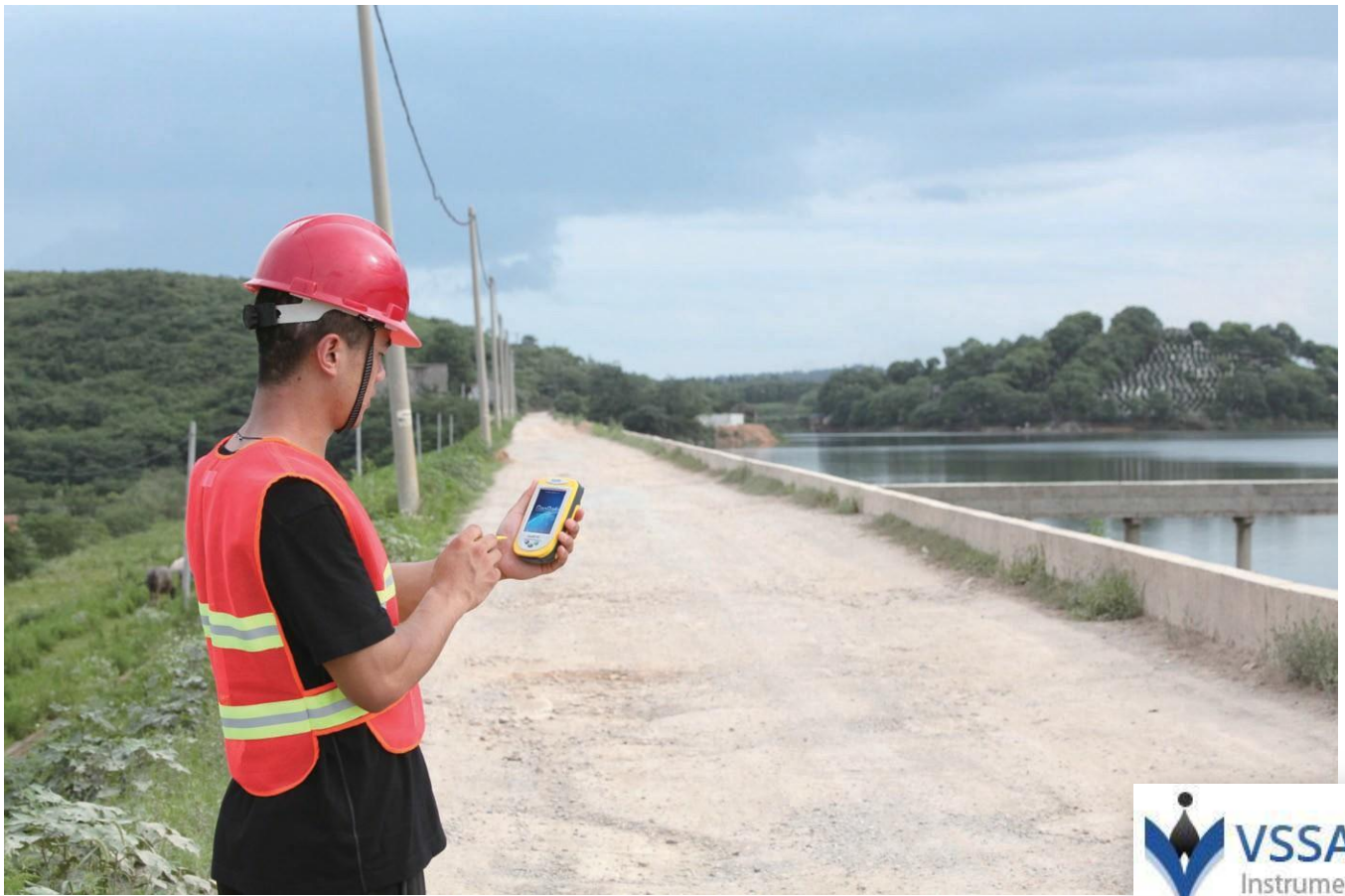




GeoRef **K2** Series

Industry Grade GIS Data Collector





Overall GNSS/GIS Solution

GeoRef K2 series is a high-sensitive GIS data collector specially designed for the industrial professionals. Compatible with the international main-stream GIS platforms especially KQ GIS, it offers overall GNSS/GIS solutions and supports large-size raster image data (up to 10GB) loading and 100 megabyte (MB) level vector data loading. With independent intellectual property, GeoRef K2 series offers high-accuracy real-time differential and kinematic survey for post-processing. Based on Windows CE operating system, KQ GEO could offer users customized applications and special functions according to different requirements. GeoRef K2 series, mini-size, lightweight but rugged, is suitable even for complicated environment.

Advanced System Configuration

- ◆ Windows CE 6.0 operating system
- ◆ 1GHz industry-grade mobile processor
- ◆ 256MB/512MB memory, 512MB flash memory
- ◆ 3.5 inches professional sunlight-readable color touch screen
- ◆ 3.7V, 4200mAh long-life Li-Ion battery, providing up to 8h continuous working with one battery

Professional GPS Functions

- ◆ 50-channels+ L1C/A
- ◆ Support SBAS (WAAS, EGNOS, MSAS, GAGAN)
- ◆ Built-in high sensitive and anti-jamming GPS antenna

Integrated 2G/3G Wireless Communication

- ◆ Industry-grade 2G/3G wireless communication modem
- ◆ Data exchange between the server center and the mobile GPS terminal
- ◆ Convenient for task assignment, online monitoring, data uploading and decision-making

Integrated Bluetooth and WiFi Wireless Communications

- ◆ Built-in Bluetooth and WiFi wireless communication modem
- ◆ Stable short-distance wireless data transmission

Integrated 3D Electronic Compass

- ◆ Effective assistance to GPS fieldwork
- ◆ High-speed and high-accuracy A/D conversion
- ◆ Zero pointing correction

Industry-grade Design

- ◆Industry-grade integrated design with multi-functions
- ◆IP67 waterproof and dustproof design against 1.5m natural drop
- ◆High-standard vehicle navigation GPS

Visual Digital Image

- ◆Built-in high resolution camera supports on-site image acquisition and annotation
- ◆Automatically matching GPS coordinates with image attributes
- ◆Built-in microphone supports on-site audio acquisition and annotation

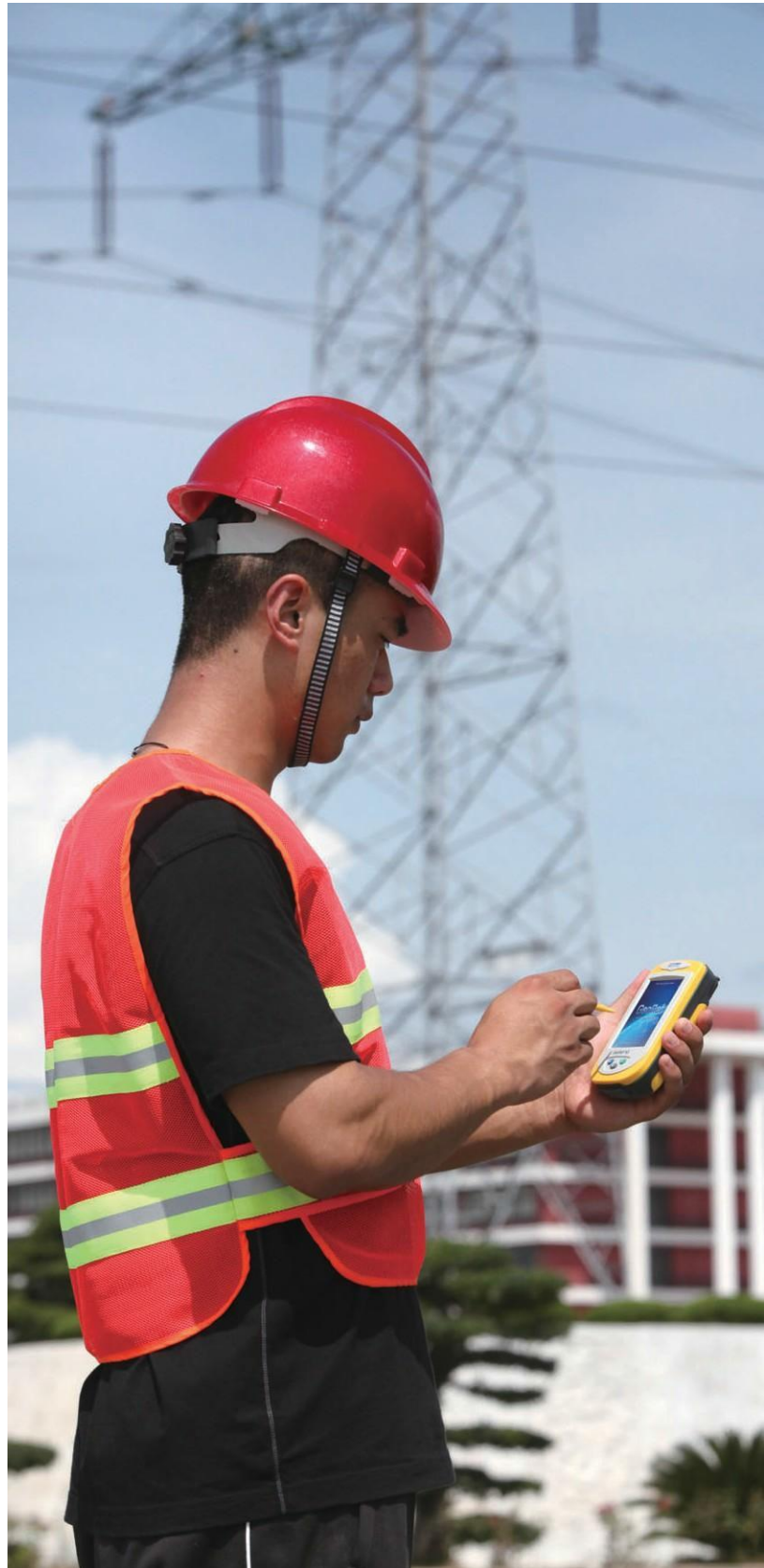
Professional Fieldwork Collection Software

GeoPac is the latest multifunctional GNSS data collection, processing and management software, containing data collection, edition, detection, analysis and storage, which is widely applied in different fields such as engineering survey, road engineering, water conservancy, forestry and etc.

- ◆Comprehensive functionalities, meeting both requirements of high-accuracy engineering survey and field data collection.
- ◆High-accuracy rapid positioning, meeting different accuracy requirements.
- ◆User-friendly interface makes heavy-duty fieldwork easy and convenient.
- ◆Universal coordinate systems with the popular Gauss, UTM, Mercator projection, etc.
- ◆Various convenient coordinate transformation tools, making plane 4-parameter, spatial 7-parameter and 3-parameter transformation easier.
- ◆Multiple professional data collection methods.
- ◆Complete attributes library and easy setup make data collection, edition and management super-easy, greatly increasing fieldwork efficiency.

Broad Application

GeoRef K2 series is your ideal assistance in many application fields such as forestry mapping, water conservancy survey, electrical system inspection, workforce automation and other areas where high productivity is more important than accuracy.



Product Type			GeoRef K2E	GeoRef K2G
System	Operating system	Windows CE 6.0 / Windows Mobile 6.5	√	√
	Processor	1GHz industrial grade mobile processor	√	√
	Memory	Memory	512MB	512MB
		Built-in 512MB flash memory	√	√
	Display	3.5 inches professional outdoor highlight color touch screen	√	√
GPS	GPS	50 channels + L1C/A	√	√
Characteristics	SBAS	WAAS, EGNOS, MSAS, GAGAN	√	√
	Antenna	Built-in high-sensitivity and anti-jamming GPS antenna	√	√
	Update rate	1Hz in default, up to 5Hz	√	√
	First positioning time	26 seconds (typical, cold boot)	√	√
Accuracy	Single point positioning	3~5m	√	√
	SBAS	1-3m	√	√
	Real time differential	1m	√	√
	Real time wide area augmentation	1~3m	√	√
	Differential post-processing	0.5m	√	√
Data Communication	Built-in Communications	Bluetooth, Wi-Fi	√	√
		GPRS	√	
		3G		√
	Interfaces	1 built-in USB port	√	√
		1 built-in SIM card slot	√	√
		1 built-in Micro SD card slot (support up to 32GB SD card)	√	√
Power Supply	Battery	Built-in 3.7V Li-Ion battery, 4200mAh	2	2
Performance	Continuous operating time	Just GNSS: 8 hours; GNSS+GPRS: 6 hours	×2	×2
Application Functions	Electronic compass	Effective assistance to the GPS fieldwork	√	√
	Camera	With image annotating function	5.0 megapixel	5.0 megapixel
	Audio	Built-in microphone and speaker	√	√
	Navigation	Built-in navigation software	√	√
Physical Performance	Size	140×84×35mm	√	√
	Weight	(With battery)	383g	383g
	Working temperature	-20°C ~ +60°C	√	√
	Storage temperature	-40°C ~ +80°C	√	√
	Humidity	95% non-condensing	√	√
	Dustproof and waterproof	IP67	√	√
	Shockproof	Resist 1.5 meters natural falling	√	√